



DBMoto™

Real-time Data Replication and Change Data Capture

Databases supported

- IBM DB2 for i, AS400
- DB2 for z/OS (OS/390)
- DB2 LUW
- Oracle
- Microsoft SQL Server
- MySQL
- Netezza TwinFin
- Sybase ASE
- SQL Anywhere
- Ingres
- Informix
- PostgreSQL
- MS Access
- Solid
- Firebird
- Unify SQLBase
- IBM Cloudscape

DBMoto is the preferred solution for your heterogeneous **Data Replication**, **Change Data Capture** and **Data Transformation** requirements in an enterprise environment. Whether you are migrating data to a lower TCO database, synchronizing data among disparate operational systems, creating a new data warehouse or data mart environment for analytics, building a business intelligence application or creating a backup of key corporate data, DBMoto is the solution of choice for fast, trouble-free, easy-to-maintain data integration projects.

If you depend on data from multiple databases, you need a data integration solution that supports major relational database systems and data warehouse appliances, and that works out-of-the-box. Using an efficient visual interface, intuitive wizards and easy-to-follow guides, DBMoto helps IT staff implement the toughest replication requirements quickly and easily. DBMoto is mature and approved by enterprises ranging from midsized to Fortune 1000 businesses worldwide.

Achieving dependable data delivery in enterprise environments requires expertise in database servers. Hit Software has been delivering relational data access products since 1994, and DBMoto incorporates proven integration technology to ensure high performance yet minimally intrusive data synchronization, using Change Data Capture for maximum efficiency.

Real-Time Data Replication and Change Data Capture

DBMoto is specifically designed to replicate data between databases in the following ways:

- Refresh (snapshot) mode:** DBMoto reads the data set, applies administrator-defined mapping rules, and writes the entire result to the target database.
- Mirroring mode:** One-way replications from source to target in real-time, using **Change Data Capture (CDC)** based on transaction log management whenever possible.
- Synchronization mode:** Uses DBMoto's CDC based on transaction log management capabilities and custom conflict resolution strategies to keep multiple databases bi-directionally synchronized.

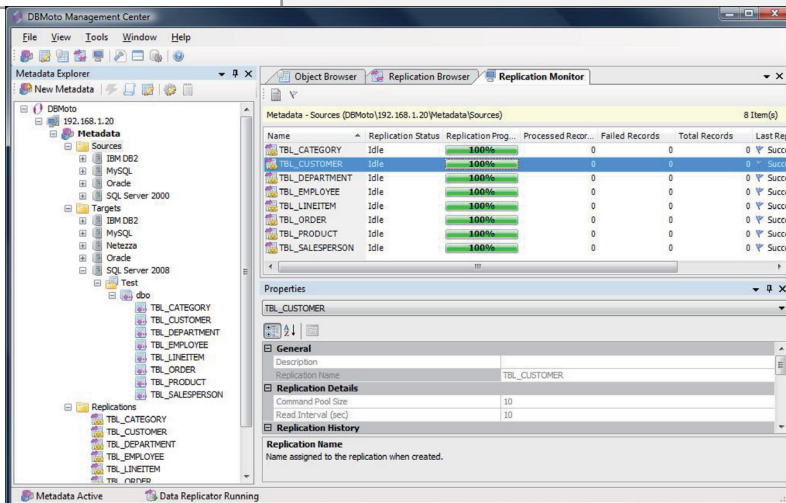
DBMoto's *Management Center GUI console* includes features to easily:

- Identify and connect to multiple source and target databases
- Create target tables
- Manage and control access to replication configurations
- Set up replication processes and group them for efficient execution
- Store replication mapping and rules in a metadata database
- Monitor replication processes, compare results, and analyze issues
- View real-time information on replication status
- Record replication activity, performance, and errors into logs, providing a quick method to spot and manage errors.

Powerful, Flexible, Configurable, Easy-to-Manage Change Data Capture!

DBMoto does not require any programming on the source or target database platforms in order to deploy or run its powerful data integration features.

DBMoto provides all functionality in easy GUI and wizard-based screens: no stored procedures to develop; and no proprietary syntax to learn.





Unmatched Replication and Transformation Control

With DBMoto, users define data replication and transformations by applying built-in mapping and customized business rules.

Business rules can be applied through scripts, which are used to filter data or to add business logic to a replication. They are generally implemented through automatically-generated events during a DBMoto replication. Scripting can perform source/target table lookups, append log activity, and update target tables. DBMoto also includes a powerful expression generator for interactive data transformation.

Databases Supported as Targets (Refresh and Mirroring Modes)*

- IBM DB2 for i and AS400 V3R2 and later
- IBM DB2 for z/OS (OS/390) v5 and later
- IBM DB2 for Windows v5 and later
- IBM DB2 for AIX, Linux, HP/UX, Solaris v5 and later
- Oracle v8 and later
- Microsoft SQL Server v6.5 and later
- MySQL v3.23 and later
- Netezza TwinFin
- Sybase ASE v12.50 and later
- SQL Anywhere
- IBM Cloudscape
- Ingres 2006
- Informix
- PostgreSQL
- Unify SQLBase Server v8.5.0 and later
- MS Access 97 and later
- Solid
- Firebird

Databases Supported as Sources (Mirroring and Synchronization Modes)*

- IBM DB2 for i and AS400 V4R3 and later
- IBM DB2 for z/OS (OS/390) v5 and later
- IBM DB2 for Windows v5 and later
- IBM DB2 for AIX, Linux, HP/UX, Solaris v5 and later
- Oracle v8 and later
- Microsoft SQL Server v6.5 and later
- MySQL v3.23 and later
- Unify SQLBase
- Sybase ASE v12.50 and later
- Sybase SQL Anywhere
- Informix

System Requirements

Windows Server 2008/2003/2000/NT
.NET Framework 2.0 SP2, or higher

* Visit www.hitsw.com for more details.

Key Features

DATABASE SUPPORT

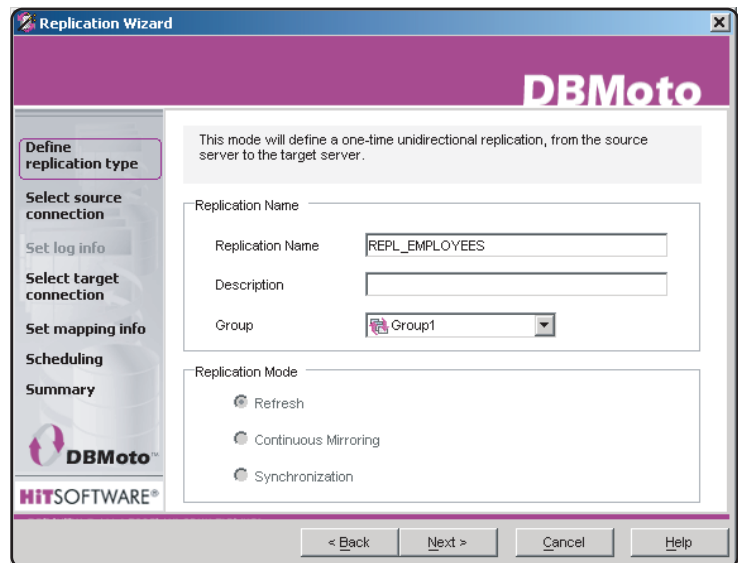
- Support for all major databases: IBM DB2 (including IBM i/AS400, z/OS, Linux, AIX, Windows), Oracle, Microsoft SQL Server, MySQL, Sybase Adaptive Server Enterprise, SQL Anywhere, Ingres, Informix, Cloudscape, Unify SQLBase, PostgreSQL, Firebird, MS Access, and Solid
- Support for Netezza data warehouse and analytic appliances
- Support for database cluster environments

REPLICATION SUPPORT

- Replication modes: **Refresh** (snapshot), **Mirroring** (change data capture), **Synchronization** (real-time bi-directional mirroring with conflict resolution)
- "Multi-Server Synchronization" to synchronize changes bi-directionally between source and multiple targets, with built-in conflict resolution
- Automatic creation of target tables
- Extensive log reporting and accessibility
- Powerful visual tool for information on replication status and errors
- DBMoto Verifier™ tool to easily compare replication results for accuracy and auditing
- Support for extended data types, such as XML
- Built-in transformation functions, with custom functions definable at any time

USER SUPPORT

- User-friendly graphical interface
- Administrative wizards for fast, easy configuration and setup
- Configuration and management of entire replication process from DBMoto's Management Center console on Windows platform
- Remote administration of DBMoto Replicator through Management Center
- Customizable via Microsoft VB.NET scripting and event driven environment
- Extensive security including user authentication and other options
- No programming needed on source or target database platforms
- Source and target table access via standard .NET data provider protocol



HiT Software, Inc. □ www.hitsw.com

phone: 1-408-345-4001 □ fax: 1-408-345-4899 □ e-mail: info@hitsw.com

HIT SOFTWARE®