

# DBMoto®

## Real-time Data Replication and Change Data Capture



A BackOffice Associates, LLC Company

### DBMoto®

DBMoto® is the preferred solution for heterogeneous **Data Replication, Change Data Capture and Data Transformation** requirements in an enterprise environment. Whether you are migrating data to a lower TCO database, synchronizing data among disparate operational systems, creating a new data warehouse or data mart environment for analytics, building a business intelligence application or creating a backup of key corporate data, DBMoto is the solution of choice for fast, trouble-free, easy-to-maintain data integration projects.

If you depend on data from multiple databases, you need a data integration solution that supports major relational database systems and data warehouse appliances, and that works out-of-the-box. Providing an efficient visual interface, intuitive wizards and easy-to-follow guides, DBMoto helps IT staff implement the toughest replication requirements quickly and easily. DBMoto is mature and approved by enterprises ranging from midsized to Fortune 1000 businesses worldwide.

Enabling dependable data delivery in enterprise environments requires expertise in database servers. HiT Software has been offering relational data access products since 1994, and DBMoto incorporates proven integration technology to ensure high performance yet minimally intrusive data synchronization using Change Data Capture for maximum efficiency.

### Real-Time Data Replication and Change Data Capture

**Refresh (snapshot) mode:** Reads data set, applies administrator-defined mapping rules, and writes the entire result to the target database

**Mirroring (CDC) mode:** One-way replication using CDC from source to target in real-time, based on transaction log management whenever possible

**Synchronization:** Uses DBMoto's CDC-based transaction log management and custom conflict resolution strategies to keep multiple databases bi-directionally synchronized

### DBMoto's Management Center GUI console:

- Identifies and connects to multiple source and target databases
- Creates target tables
- Manages and controls access to replication configurations
- Sets up replication processes and groups them for efficient execution
- Stores replication mapping and rules in a metadata database
- Monitors replication processes, compares results, and analyzes issues
- Provides real-time information on replication status
- Records replication activity, performance, and errors into logs, to quickly spot and manage errors.

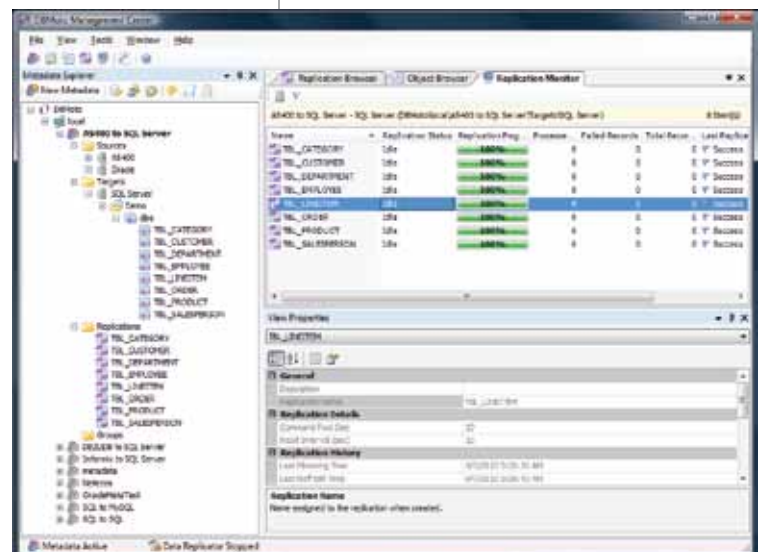
### Powerful, Flexible, Configurable Change Data Capture!

DBMoto® does not require any programming on the source or target database platforms in order to deploy or run its powerful data integration features.

DBMoto provides all functionality in easy GUI and wizard-based screens; no stored procedures to develop; and no proprietary syntax to learn.

#### Databases Supported:

- IBM DB2 for i, AS400
- DB2 for z/OS (OS/390)
- DB2 LUW
- Oracle
- Microsoft SQL Server
- MySQL
- Netezza
- Sybase ASE
- SQL Anywhere
- Ingres
- Informix
- PostgreSQL
- Firebird
- Unify SQLBase



## Unmatched Replication and Transformation Control

With DBMoto®, users define data replication and transformations by applying built-in mapping and customized business rules.

Business rules can be applied through scripts which filter data or add business logic to a replication.

They are generally implemented through automatically-generated events during a DBMoto replication. Scripting can perform source/target table lookups, append log activity, and update target tables. DBMoto also includes a powerful expression generator for interactive data transformation.

### Databases Supported as Targets (Refresh and Mirroring Modes)\*

IBM DB2 for i and AS400 V3R2 and later  
IBM DB2 for z/OS (OS/390) v5 and later  
IBM DB2 for Windows v5 and later  
IBM DB2 for AIX, Linux, HP/UX, Solaris v5 and later  
Oracle v8 and later  
Microsoft SQL Server v6.5 and later  
MySQL v3.23 and later  
Netezza  
Sybase ASE v12.50 and later  
SQL Anywhere  
IBM Cloudscape  
Ingres 2006  
Informix  
PostgreSQL  
Unify SQLBase Server v8.5.0 and later

### Databases Supported as Sources (Mirroring and Synchronization Modes)\*

IBM DB2 for i and AS400 V4R3 and later  
IBM DB2 for z/OS (OS/390) v5 and later  
IBM DB2 for Windows v5 and later  
IBM DB2 for AIX, Linux, HP/UX, Solaris v5 and later  
Oracle v8 and later  
Microsoft SQL Server v6.5 and later  
MySQL v3.23 and later  
Unify SQLBase  
Sybase ASE v12.50 and later  
Sybase SQL Anywhere  
Informix

### System Requirements

Windows Server 2008/2003/2000/NT  
.NET Framework 2.0 SP2, or higher

\* Visit [www.hitsw.com](http://www.hitsw.com) for more details

## Key Features

### DATABASE SUPPORT

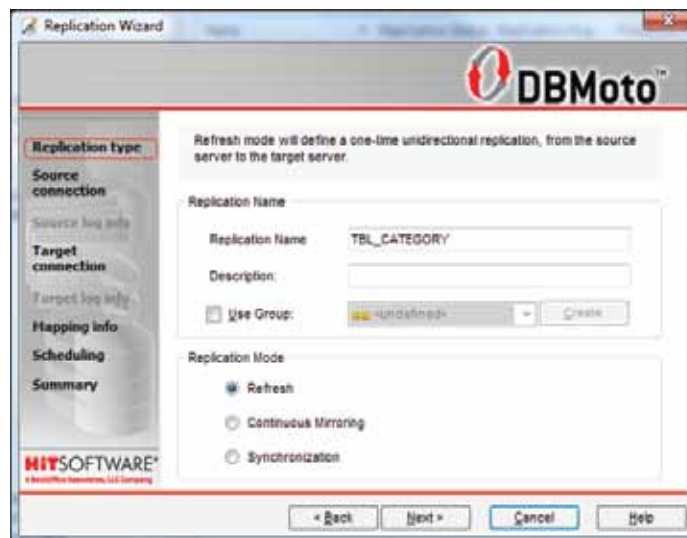
- Support for all major databases as sources: IBM DB2 (including IBM i/AS400, z/OS, Linux, AIX, Windows), Oracle, Microsoft SQL Server, MySQL, Sybase Adaptive Server Enterprise, SQL Anywhere, Ingres, Informix, Cloudscape, Unify SQLBase and PostgreSQL
- Support for Netezza data warehouse and analytic appliances
- Support for database cluster environments
- Support for Cloud environments and databases
- Open APIs to integrate DBMoto into corporate architectures, or into third-party solutions

### REPLICATION SUPPORT

- Replication modes: Refresh (snapshot), Mirroring (change data capture), Synchronization (real-time bi-directional mirroring with conflict resolution)
- “Multi-Server Synchronization” to synchronize changes bi-directionally between source and multiple targets, with built-in conflict resolution
- Automatic creation of target tables
- Extensive log reporting and accessibility
- Powerful visual tool for information on replication status and errors
- DBMoto Verifier™ tool to easily compare replication results for accuracy and auditing
- Support for extended data types, such as XML
- Built-in transformation functions, with custom functions definable at any time

### USER SUPPORT

- User-friendly graphical interface
- Administrative wizards for fast, easy configuration and setup
- Configuration and management of entire replication process from DBMoto's Management Center console on Windows platform
- Remote administration of DBMoto Replicator through Management Center
- Customizable via Microsoft VB.NET scripting and event driven environment
- Extensive security including user authentication and other options
- No programming needed on source or target database platforms
- Source and target table access via standard .NET data provider protocol



REAL-TIME DATA REPLICATION · CHANGE DATA CAPTURE · HETEROGENEOUS DATABASE SUPPORT

HIT Software, Inc., A BackOffice Associates, LLC Company

T: +1 408.345.4001 F: +1 408.345.4899

info@hitsw.com www.hitsw.com

Copyright © 2011 HIT Software, Inc., A BackOffice Associates, LLC Company. All rights reserved. HIT Software®, HIT Software logo, DBMoto and DBMoto Verifier are trademarks or registered trademarks of HIT Software and BackOffice Associates, LLC in the United States and other countries. All other trademarks are the property of their respective owners.

1002-11300-102\_b



A BackOffice Associates, LLC Company

BackOffice  
ASSOCIATES